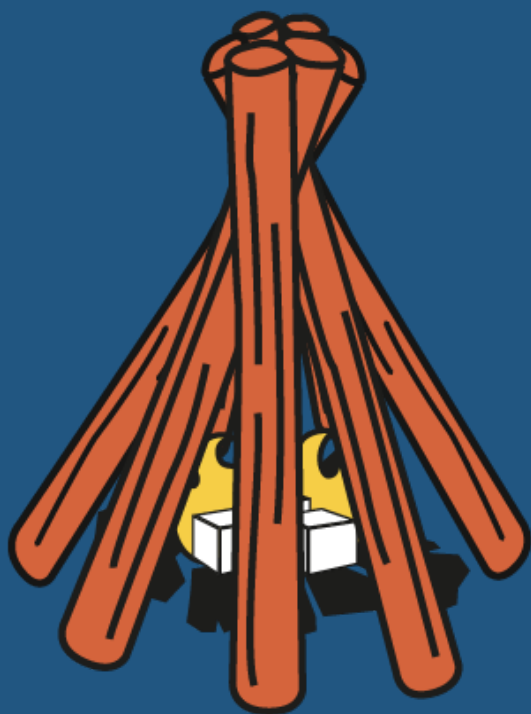




# THE PERFECT CAMPFIRE GUIDE





## What you'll need

Tinder (or fire lighter cubes)

Kindling & Firewood

Matches (long or short)

Bushcraft knife

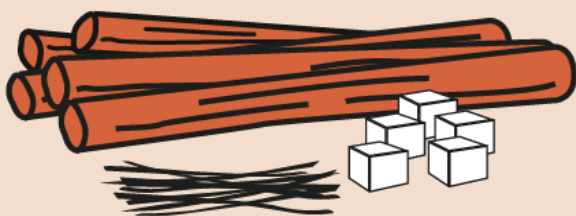
A bucket (with water)

**Remember:** Only light fires where it is allowed, and never (ever) when there is a fire ban, or when it's windy. Place your fire on gravel or sandy ground, with stones and gravel underneath and a ring of stones around it. The fire should not be placed on or next to a rock face, neither on peatland nor moss. Avoid starting a fire near trees, tree stumps, or dry grass.



## Step 1

Collect/carve tinder, or bring out your fire lighting cubes, and kindling (6" sticks).

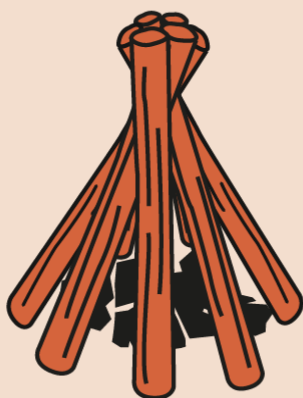


**Remember:** Only light fires where it is allowed, and never (ever) when there is a fire ban, or when it's windy. Place your fire on gravel or sandy ground, with stones and gravel underneath and a ring of stones around it. The fire should not be placed on or next to a rock face, neither on peatland nor moss. Avoid starting a fire near trees, tree stumps, or dry grass.



## Step 2

Build a tipi structure with your kindling leaned together over a big bundle of tinder as base.

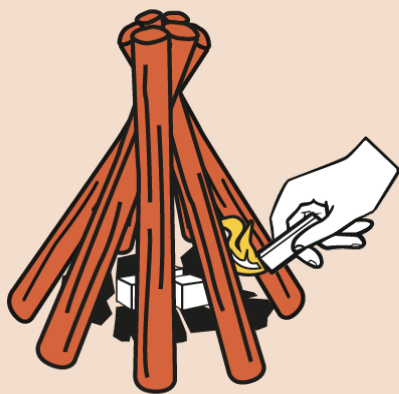


**Remember:** Only light fires where it is allowed, and never (ever) when there is a fire ban, or when it's windy. Place your fire on gravel or sandy ground, with stones and gravel underneath and a ring of stones around it. The fire should not be placed on or next to a rock face, neither on peatland nor moss. Avoid starting a fire near trees, tree stumps, or dry grass.



## Step 3

Grab your matches and light the tinder/firelighter cubes. It helps to light the tipi structure in a few different places to get it burning faster. Add more tinder if the kindling takes a while to catch fire. As it burns, you can gradually add larger and larger sticks, and then firewood.

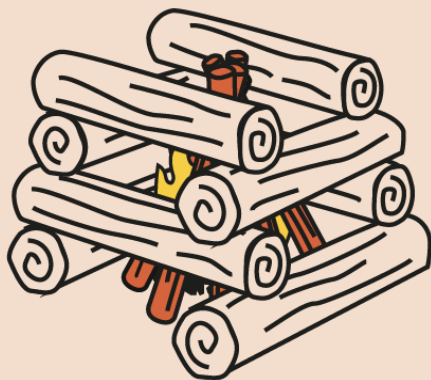


**Remember:** Only light fires where it is allowed, and never (ever) when there is a fire ban, or when it's windy. Place your fire on gravel or sandy ground, with stones and gravel underneath and a ring of stones around it. The fire should not be placed on or next to a rock face, neither on peatland nor moss. Avoid starting a fire near trees, tree stumps, or dry grass.



## Log cabin

Some prefer to build large tipis with their firewood, while others build a square structure around their small tipi. Generally, the square "log cabin" structure is better for letting out heat, but a tipi is easier to make into a large bonfire.



**Remember:** Only light fires where it is allowed, and never (ever) when there is a fire ban, or when it's windy. Place your fire on gravel or sandy ground, with stones and gravel underneath and a ring of stones around it. The fire should not be placed on or next to a rock face, neither on peatland nor moss. Avoid starting a fire near trees, tree stumps, or dry grass.